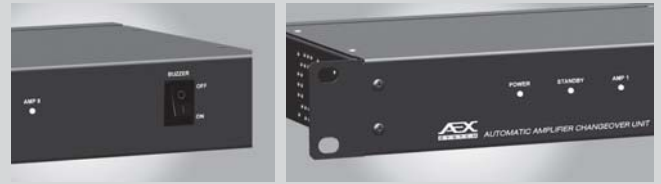




Protecting Your Human Assets During Emergency

AC 04S & AC 08S Automatic Amplifier Changeover Unit



AC 04S and AC 08S provides supervision of Duty amplifiers and provides automatic changeover of faulty amplifiers to a Standby amplifier.

The AC 04S is capable of monitoring 4 Duty amplifiers with automatic changeover to a standby amplifier while the AC 08S is capable of monitoring up to 8 Duty amplifiers with changeover to 1 standby amplifier.

The standby amplifier will back-up the duty amplifiers on a first come first serve basis. The unit also provides aural and visual indication to notify users of faulty amplifier.

- Monitors 4 duty amplifiers channels and 1 standby amplifier channel
- Performs 1-to-4 amplifier backup on first come first served basis
- Automatic amplifier channel connection sensing

- Monitors 8 duty amplifiers channels and 1 standby amplifier channel
- Performs 1-to-8 amplifier backup on first come first served basis
- Automatic amplifier channel connection sensing



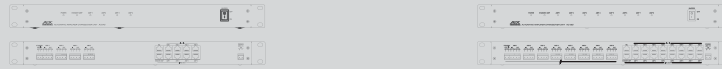
AC 04S

Automatic Amplifier Changeover Unit



AC 08S

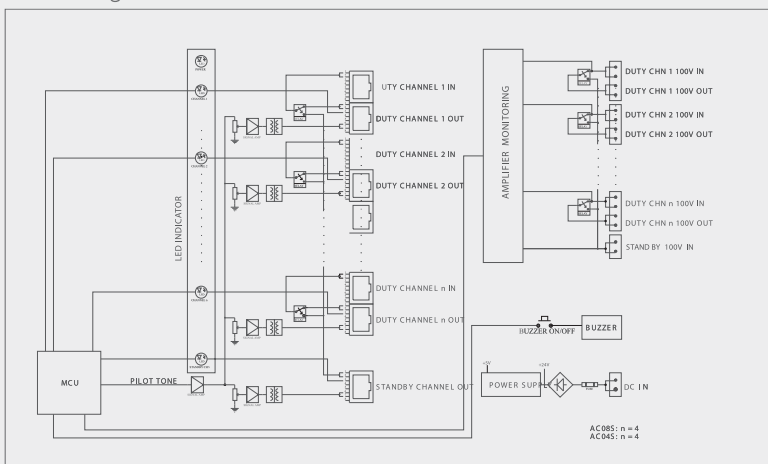
Automatic Amplifier Changeover Unit



Technical Specifications

	AC 04S	AC 08S
Connected Power Handling Per Zone	1200 W per channel	1200 W per channel
Nos. Of Channels per Unit	4 channels Duty , 1 Channel Standby	8 channels Duty , 1 Channel Standby
Connectors	Power : 2-Way Panel Feed Through Connector I/O (100 V Line) : 4-Way Panel Feed Through Connector I/O (Line Level) : RJ 45 Socket	2-Way Panel Feed Through Connector 4-Way Panel Feed Through Connector RJ 45 Socket
Indicators	POWER, Bi - Color Indicator for 8 Channel Status & Standby Amplifier	POWER, Bi - Color Indicator for 8 Channel Status & Standby Amplifier
Power Requirements	24 Vdc (Regulated), 0.5 A	24 Vdc (Regulated), 0.5 A
Dimensions (W x H x D)	430 x 44 x 150 mm	430 x 44 x 150 mm
Material & Finish	Epoxy Coated Black	Epoxy Coated Black
Weight	2.3 kg	2.4 kg

Block Diagram



Engineers' Specifications

AC 04S

The AC 04S Automatic Amplifier Changeover Unit shall continuously monitor the operation of 4 duty power amplifiers and one standby power amplifier for fault. Upon detection of fault at the duty amplifier, the unit shall switchover the loudspeaker line of the faulty amplifier to the standby amplifier. The unit shall also switch the balanced line input of the faulty amplifier to the standby amplifier. The alarm can be deactivated by a switch located at the front panel. The Amplifier Changeover Unit shall be able to be linked up to a maximum of 4 units if there are more than 4 power amplifiers to be backed up by one unit of standby power amplifier. The dimensions of the unit shall be 430 x 44 x 150 mm (W x H x D). The weight of the unit shall not exceed 2.3 kg.

AC 08S

The AC 08S Automatic Amplifier Changeover Unit shall continuously monitor the operation of 8 duty power amplifiers and one standby power amplifier for fault. Upon detection of fault at the duty amplifier, the unit shall switchover the loudspeaker line of the faulty amplifier to the standby amplifier. The unit shall also switch the balanced line input of the faulty amplifier to the standby amplifier. The alarm can be deactivated by a switch located at the front panel. The Amplifier Changeover Unit shall be able to be linked up to a maximum of 8 units if there are more than 8 power amplifiers to be backed up by one unit of standby power amplifier. The dimensions of the unit shall be 430 x 44 x 150 mm (W x H x D). The weight of the unit shall not exceed 2.4 kg.



AC 04S



AC 08S



AC 04S & AC 08S